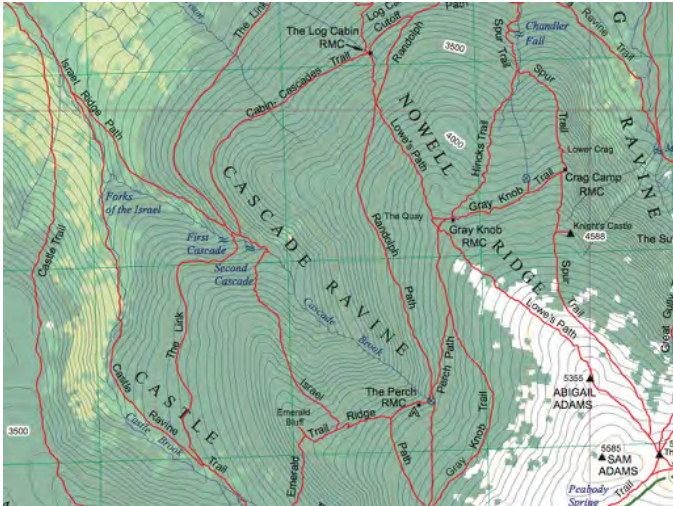




Randolph Mountain Club Newsletter

June 2017

“... sharing the collective knowledge of its members ...”



SUMMER 2017 VOLUNTEER WORK TRIPS

by Bob Drescher and Chris Campbell

INTERVIEW WITH LAURA WATERMAN

by Doug Mayer

We plan to accomplish a lot through volunteer work on RMC trails this summer, and as always we invite members to join us. Our New Hampshire Recreational Trails Program (RTP) grant, which supports seven and a half weeks of work by the RMC trail crew on the Israel Ridge Path, also commits a match by the RMC of at least 48 hours of volunteer work on this trail. The trail crew will be mitigating considerable erosion on a 1.8-mile section of the trail, while volunteers brush (creating a 4' x 8' corridor through vegetation) and blaze the 2.8 miles of the trail below treeline. We have allocated five volunteer work sessions (see the schedule at the end of this article) to meet a goal of putting this trail in top shape.

Beyond this significant project on the Israel Ridge Path, we'll lead volunteer outings to diverse RMC trails, from trail sections near the new trailhead on Mt. Crescent to the Monaway/Ladderback to the Edmunds Col Cutoff. Two volunteer days will be trail assessments on the section of the Appalachian Trail that the RMC maintains and the Starr King

It's safe to say that no couple has had a bigger impact on the White Mountains in the past half century than Laura and Guy Waterman. Their many books, most notably Forest and Crag, Yankee Rock and Ice, and Wilderness Ethics, fell into the “must-read” category for a generation of hikers and climbers in our region. Guy and Laura guided the thinking of both important opinion leaders and everyday hikers. Their books and articles created a framework for discussing and making decisions about backcountry management and wilderness values. Their book Backwoods Ethics is often credited with being one of the factors that drove the creation of what is now the Leave No Trace movement.

Since Guy first filled in as a winter RMC caretaker starting in 1991, the Watermans have had a special connection to our club. They spoke at the club's annual meeting, and offered guidance on important club decisions when asked. When Guy died, RMC provided critical administrative support to help launch the Waterman Fund—an entity from which RMC has now benefited several times.

Continued on page 7

Continued on page 8

Above: Israel Ridge Path, ascending diagonally from top left corner, to right; detail from the 2016 RMC Trail map.

Above: Laura Waterman at home in East Corinth, Vermont. Doug Mayer photo.

Also in This Issue:

Social Events / Annual Meeting	page 3
Meet the Trail Crew	page 4
Meet the Camp Caretakers	page 6

Cog Railway Hotel Proposal	page 7
Volunteer Profile.....	page 8
Treasurer's Report / Planned Giving	page 10

Randolph Mountain Club 2016-2017

Officers, Board of Directors,
committee chairs and life members

President	Jamie Maddock, South Berwick ME
Vice President	Kate Hudson, Pelham MA
Treasurer	Kathleen Kelley, Randolph NH
Secretary	Randy Meiklejohn, Brookline MA
Other Directors:	Pete Antos-Ketcham, Starksboro, VT Dwight Bradley, Randolph NH Chris Campbell, Belfast ME Bob Drescher, Barnstead NH Benzo Harris, Portland ME Carl Herz, Bedford MA Jenn Scarinza, Randolph NH Samarjit Shankar, Arlington MA Jeff Smith, Berlin NH Ryan Smith, West Peabody MA Franklin Stone Wenk, Brooklyn NY
Camps:	Pete Antos-Ketcham
Trails:	Bob Drescher, Benzo Harris
Social Events:	Jenn Scarinza, Franklin Stone Wenk
Trips:	Barbara Cutter, Brian Roberts
Merchandise:	Michele Cormier
Planned Giving:	Randy Meiklejohn
Communications:	Samarjit Shankar
Membership:	Michele Cormier
Stewardship:	Samarjit Shankar
Safety:	Bill Arnold
Stearns Lodge:	Paul Cormier
Work Trips:	Chris Campbell, Bob Drescher
Newsletter:	Randy Meiklejohn
Webmaster:	Jeff Smith
Archivist:	Al Hudson
Historian:	Judy Hudson
Cartographer:	Jon Hall
Radios:	Bill Arnold
Life members:	Bill & Barbara Arnold Paula Bradley Al & Judy Hudson Robert Kenyon Edith Tucker

The mission of the Randolph Mountain Club is to promote the enjoyment of the Randolph area through hiking, trail development and maintenance, upkeep of camps and shelters, and the sharing of the collective knowledge of its members.

The Randolph Mountain Club is a diverse organization, committed to equal opportunity in employment and program delivery. The RMC prohibits discrimination on the basis of race, color, national origin, sex, religion, age, disability, sexual orientation, political affiliation and familial status.

www.randolpmountainclub.org

From the President ...



Another update from north of the notches; here are some notes about what your board of directors has been working on over the winter months, and about club activities in the upcoming 2017 summer season. I'll hope to see many of you soon at the 4th of July Tea, and we'll have our usual cycle of social events, hikes and volunteer days throughout the summer season, with the Annual Meeting and the Picnic in August as always.

Finances have been the board's focus since the fall, and at our April meeting we made some changes that will improve our operations going forward. The first of these is the appointment of Katie Kelley as our Treasurer. She joined the board last August, and brings significant expertise in non-profit financial systems. The RMC's world continues to grow more complicated, especially when it comes to taxes and financial reporting; for example just in the last two years we have created two new restricted funds (the Mt. Madison Fund and the Ben Campbell Fund). It has become a major task to manage these and other assets, to track all the numbers for grant reimbursements, and to make sure payroll is done correctly throughout the year, so we're glad to have Katie to guide these operations as a member of the board.

Also at the April meeting, we agreed to engage a professional accounting firm for services year-round, and to adopt web-based accounting software. Crane & Bell, of Lancaster, are the accountants, and we'll share our financial information with them through QuickBooks online, so that the directors can have access to it in real time. Thanks to our outgoing bookkeeper Sally Dinsmore Baldwin, for her assistance since last year and her help with this transition.

With better financial data, we can also get Katie's assistance with our metrics. The RMC stacks up very well compared to most nonprofits, in that a large percentage of any donation goes directly to trails or camps. We have a low overhead, because so much of the work of the club is performed by volunteers. Webmaster Jeff Smith is setting up an app that will let RMC volunteers track and report their unpaid hours, for the first time. This will help us apply for grants, since outside funders often prefer to give to organizations that are strongly supported by their own members' volunteer efforts.

In 2017, the trails program is where financial management and volunteer contributions come together in an important way. We will be making improvements to the Israel Ridge Path using funds from a RTP grant (see page 4), and one condition of the grant is that the RMC provide a match of \$5,000.00. Our proposal is to provide this value in volunteer labor, so that is why Bob Drescher and Chris Campbell have organized a number of volunteer work trips (see page xx). Please sign up for one of them; they are a lot of fun and no heavy lifting is required. Volunteers will do primarily blazing and brushing, and will learn about what it takes to maintain our trails and about the more advance work the trail crew will be doing under the grant.

See you soon in Randolph!

Jamie Maddock

Above, Jamie Maddock, briefly at rest, at home in Maine, in May.
Sue Maddock photo.

Summer Social Events

By Jenn Scarinza and Franklin Stone Wenk

Tuesday, July 4th: Once again, we return to Mark and Katie Kelley's wonderful barn at 98 Randolph Hill Road for the annual **RMC Fourth of July Tea**. Join us from 3:00 to 5:00 PM for punch, iced tea and delicious baked goods. Catch up on the latest RMC news, meet this year's trail crew and caretakers, check out our merchandise, sign up to lead a hike and connect with friends, old and new. Please help us bring together all the RMC's generations at this event, and contact Jenn or Franklin (phone numbers below) if you or a friend or family member would like assistance with stairs, a ride up to the barn entrance, or a nearby accessible parking space.

Thursday, August 3rd: The **RMC Gourmet Hike** returns to the Pine Mountain ledges. Meet at Randolph East at 10:00 AM; we will carpool to the trailhead and ascend via the Ledge Trail. Thanks to the Horton Center, a shorter ascent will be available for those who wish to take it.

Thursday, August 10th: Don't miss out on the popular summer **RMC Gourmet Dinner** at Libby's Bistro in Gorham, 6:00 PM. Many thanks to owner/chef Liz Jackson for continuing to welcome the RMC. Great dining and our funky raffle to support the club! Space is limited - to reserve your spot, contact the Social Events Chairs (below).

Saturday, August 19th: The 105th **Annual RMC Picnic and Charades**, noon to 2:00 PM at the Mossy Glen Amphitheater off of Durand Road. Bring a picnic lunch and your very own cup; punch provided. Rides up to Mossy Glen are available. In the event of rain, the festivities will be moved to the Randolph Town Municipal Bldg., Pinkham "B" Road.

A **Square Dance to Benefit the RMC** will take place also on Saturday August 19th, from 7:30 to 9:30 PM in the Beringers' barn at Sugar Plum Farm, 232 Randolph Hill Road. Music and calling provided by "Two Fiddles" Jacqueline and Dudley Laufman. All dances taught, beginners encouraged! Many thanks to Marie Beringer for her ongoing sponsorship of this event; additional donations are welcome.

Watch the **Randolph Weekly** all summer for more details about each of these events. Would you like to help out by volunteering to welcome people or serve punch at the Tea, lead your section of the Charades, or donate a Gourmet Dinner raffle item or sponsor a crew member for the dinner at Libby's? Please contact Social Events Co-Chairs: Jennifer Scarinza, jbarton@ttlc.net; (603) 631-0870 or Franklin Stone Wenk, franklin@stonewenk.com; (917) 597-1848. See you this summer!



The 2016 Gourmet Hike, Pine Mtn. Franklin Stone Wenk photo.

Annual Meeting Notice

By Randy Meiklejohn, club secretary

The 2017 Annual Meeting of the Randolph Mountain Club will be held at the Randolph Town Hall on Saturday, August 12th at 7:00 PM. Following a business meeting for officer and committee reports, and for election of new directors and a president, there will be a presentation by a guest speaker. Light refreshments will be served and the public is welcome to attend.

This year's speaker, Sally Manikian, will share stories and images from the **She's the Top Dog** project, her collection about women in mushing. Mushing is one of a handful of sports where men and women compete directly against each other, and it offers a fascinating look into gender, equality, and possibility. This presentation is a direct reading of quotes, stories, and more from fifteen different women around the country, as well as exploring women's presence in racing. It is beautiful, humorous, inspirational and powerful. More at shadypinnessleddogs.com.

Sally will also talk more generally about the sport and her team, about the dogs, gear, and what it takes to train a team for 250-mile races (as well as what it is like to compete in them!) She'll bring her sled and other gear and will answer questions. Sally has competed in and finished five 250-mile races in the past three years, including the Can Am Crown 250 in Fort Kent, ME and The UP200 in Marquette, MI; also shorter races such as the Mahosuc 100 (4th place), the Eagle Lake 100 (4th Place) and the Wilderness 60 (3rd Place). She is an RMC member, served as a camp caretaker in 2007-08 and as a Club director 2008-11.



Sally Manikian and her team on the race course. Pete Freeman photo.

Trails Report & Meet the Trail Crew

By Bob Drescher & Benzo Harris, Trails co-chairs



Brian Behr
Field Supervisor
Tamworth, New Hampshire

Breaking out trails in April serves as a reminder of winter's long reach here in Randolph, and reveals how many blowdowns those howling winds can create. We'll have plenty to do this year, and are very fortunate to have Brian Behr taking over as our Field Supervisor for the RMC trail crew. A crew leader for two of his four years on the crew and also a camp caretaker, Brian will be joined by returning crew members Justin Taylor (3rd year) and Hailey Vlass (2nd year), who like Brian, bring a wealth of experience and dedication to RMC trails. We welcome first-year crew members Adam Alger, Jameson Hunt, Darby Lamb, Andrew Olson, Matt Rebolini and Vince Reichheld. We're looking forward to helping them learn a lot in their first season of RMC trail work, and the enthusiasm they've expressed promises to make this a great season.

Continued on page 8



Serving Suggestion

Invite the trail crew to dinner! See page 5



Adam Alger
Cumberland, Rhode Island
1st year



Jameson Hunt
Wayland, Massachusetts
1st year



Darby Lamb
Merritt Island, Florida
1st year



Andrew Olson
Ellsworth, Iowa
1st year



Matt Rebolini
Huntington, New York
1st year



Vince Reichheld
Wolfeboro, New Hampshire
1st year



Justin Taylor
Crew Leader
Framingham, Massachusetts
3rd year



Hailey Vlass
West Newbury, Massachusetts
2nd year

RMC Camps

By Pete Antos-Ketcham, Camps chair

Winter came in like a lamb and left like a lion. After dealing with a few months of low snow cover and ice, late winter storms (including the impressive Nor'easter: Winter Storm Stella) helped make the end of the winter season exciting for our guests and caretakers at the camps. Our winter caretakers Justin Taylor and Carl Herz were with us through early April, when they were replaced by spring caretakers Kevin Ross and Brian Behr (now, our 2017 Field Supervisor). In summer, veteran RMC field staffer JP Krol will join us at Crag Camp and be joined by Rowan Kamman (2016 Trail Crew). We are excited to have the care of the camps and our guests in the capable hands of JP and Rowan. We are still looking for our fall caretakers, but if history is any guide, we'll have no trouble filling these slots soon as we continue to attract more qualified applicants than we have slots open.

On the project front this summer, at Crag Camp we will continue to work on weather sealing and on planning for additional window replacement. In recent years we have seen evidence of water infiltration in the corner above the east door. This year we will open this up and make sure that it is well sealed. We will also inspect and apply a second round of caulking around the windows we replaced last year. Some of the wood may have shrunk and some of the caulking may have split. There are still eight remaining windows at Crag that need replacing in the near future. At Gray Knob this summer we will be doing an assessment and creating a plan to expand and thus complete the composting toilet work platform behind the outhouse. This project was partially completed a few years ago. Owing to a very steep slope behind Gray Knob's outhouse, a deck system is needed to accommodate all of the composting infrastructure as well as provide enough room for a few field staff to work when processing a batch of compost. Over at the Perch, we are planning to repair the decking on the tent platforms, which are starting to show their age. In order to improve the quality of the tenting experience, we will replace the pressure treated decking with a local rot resistant wood that we will periodically waterproof with a natural oil. At the Log Cabin we will work to replace the aging railing and stair system. In addition to these projects, caretakers will be engaged in general camps upkeep and maintenance as well as basic trail work on the main approach trails to the camps.

To help us complete these important projects, I am pleased to report we were successful in obtaining funding assistance from the Appalachian Trail Conservancy (ATC) through their Grants to Clubs program (with support from L.L. Bean) to help defray the cost of the Perch tent platform repairs (our closest shelter to the AT and often used by AT hikers). Thank you L.L. Bean and ATC for your continued support of RMC's Camps program.

On the multi-year project-planning front, we continue to work with RMC builder John Tremblay and the Board to develop five- and ten-year capital plans for the camps. This winter we

Continued on page 11

Meet the Summer 2017 Camp Caretakers

By Pete Antos-Ketcham, and JP and Rowan

JP is originally from Long Island, NY. He thru-hiked the Appalachian Trail in 2010 and started his caretaking career for the Green Mountain Club in July 2011. Since then he has worked extensively for the GMC, AMC, LeConte Lodge and the RMC. Summer 2017 will be his fifth season working for the RMC. He was previously a Spring Caretaker in 2012 & 2014 and he was on the RMC Trail Crew in 2014 and 2015. This summer you will find him reading on the Crag Camp porch or hiking the King Ravine headwall as he works on his RMC 100!



JP Krol

Crag Camp caretaker
3rd year



Rowan Kamman

Gray Knob caretaker
1st year

Rowan writes: I'm just a Vermont boy from the bustling metropolis of Vergennes. My parents were charitable enough to bring my infant self along on hikes in a backpack, which long-story-short is how I came to be the summer caretaker at Gray Knob. Fear not, the backpack is no longer necessary and I can hike all by myself.

I love maps, which is partly why I'm studying Geography and Geospatial Technology at the University of Vermont. Also, I like to write. My first two years of college went by startlingly fast; I fear I might be getting old.

Swinging my axe with gay abandon (read: calculated accuracy), I worked with RMC's trail crew during the summer of 2016. I feel grateful to return to Randolph, and I look forward to what my second season will bring. Please come visit! I'll leave you with this little gem.

Vermont boy packs in
to Gray Knob for the summer
and stirs the compost

Sunday Dinners With the Trail Crew

Would you like to have dinner with our trail crew, and get to know them? Many are new to Randolph this year. You bring the dinner; they'll bring the appetites. To sign up for one of these weekly events (starting June 4), contact Kathleen Kelley.

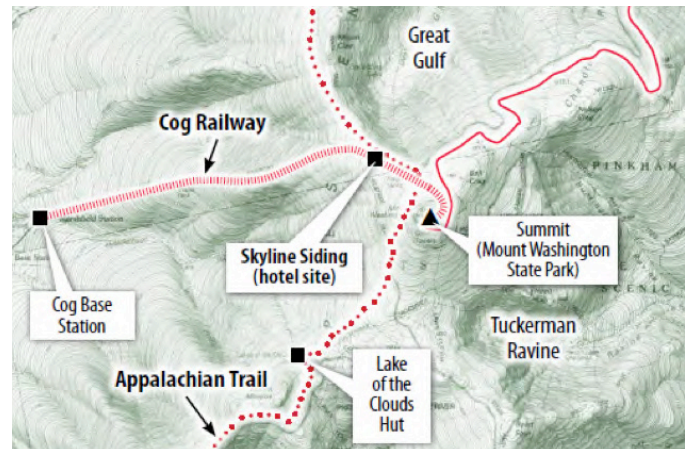
Cog Railway Hotel Proposal

By Franklin Stone Wenk

In late 2016, the Mt. Washington “Cog” Railway Company announced plans to build a new 35-room seasonal hotel and restaurant on Mount Washington, on the strip of land occupied by the railway line and owned by the Company. The proposed hotel’s site, the “Skyline Siding”, is located about a mile northwest of the summit, near the Gulfside Trail and the trail’s crossing of the railway line.

The project is subject to regulatory approval by the Coos County Planning Board and the Zoning Board of Adjustment, because its site is above the 2,700-foot elevation set by the county’s Master Plan. Environmental groups have expressed concern about the impact upon the mountain’s highly sensitive alpine zone. Supporters argue the benefits for the growing numbers of visitors and the local economy. If approved, the hotel could open in time for the Cog’s sesquicentennial in 2019.

News coverage of the hotel proposal has appeared in the print and online editions of the Boston Globe, the Manchester Union Leader, the Concord Monitor, the Berlin Daily Sun, the Coos County Democrat, and other publications.



Top right: view of the Cog Railway and Mt. Jefferson and the Great Gulf beyond, from the Gulfside Trail south of the tracks (note the cairns); Franklin Stone Wenk photo.
 Below right: map of the summit area, indicating the proposed hotel site; Manchester Union Leader.



In the December 2016 newsletter, President Jamie Maddock reported on a recently-received grant from the new Hampshire Outdoor Council, for rescue equipment. Here, Bill Arnold demonstrates the features of our new light-weight, two-piece titanium litter. Edith Tucker photos, Berlin Daily Sun.

Field Work for RMC Cartography

... from the web ...

If you’ve enjoyed using the 2016 RMC trail map (featured in the June 2016 issue of this newsletter), you might want to know more about the field work and the technology behind it. RMC cartographer Jon Hall writes a blog called “Left Gully”, at lftgly.com, with narratives and photos of his mapping activities. In his post of April 3, 2016 he details the field work for documenting the map’s revised boundaries of the Randolph Community Forest (expanded by the addition of the ten-acre parcel at the new trailhead), and of the White Mountain National Forest (expanded by the addition of a hundred-acre parcel traversed by the Sylvan Way).



Jon Hall at the new WMNF border, near the Sylvan Way. Courtesy photo.



Renee Dunham on a non-work hike. Courtesy photo.

RMC Volunteer Profile

In 2016 the board of directors recognized member Renee Dunham for her volunteer efforts with the Club’s trail work days; she is active also in social events, and regularly leads trips.

I’ve been awarded WHAT? RMC Volunteer of the Year? How embarrassing. OK, I did appear pretty often when Robert Drescher and Chris Campbell led the trail brushing and blazing volunteer parties, but for totally selfish reasons. Let me explain.

The summer hiking population in my late-age group had become severely diminished, so a few years ago I started hiking alone for the first time. It was intoxicating but edged with some apprehension. The volunteer trail maintenance events offered an alternative - an opportunity for conversation and safety in the very places I wanted to be.

Oh yes, there was the motivation of being helpful and paying back for all those past years of tripping over roots and rocks, but the helpfulness got so tied in with the benefits of working slow that it got repackaged as yet another delightful thing to do: I got up close to details in the woodland tangle, enjoyed conversations with Chris and Bob, and learned all sorts of things woodland and otherwise. I often had these two mountain-smart, entertaining directors all to myself. And that’s the point: where was my competition for this award? Where were all the people who also could have worked and conversed while mountain was growing into them? Come on out. I think you will love it. Meanwhile, thank you, but I’m still embarrassed.

Volunteers, continued from page 1

Trail. Members of the RMC Trails committee will identify the improvement work needed on these two trails, and show other volunteers how these important assessments are undertaken (see related article in the December 2016 issue of this newsletter).

All volunteer trail workdays start at 9:00 AM. Volunteers should dress for trail work and bring eye protection and work gloves, plus tools for light work (such as hand clippers, small saw, or loppers), and lunch. If you have any questions, contact Chris Campbell (207) 356-1123; or campbell@maine.edu. Our schedule has some flexibility, so, if you’d like to let us know about another RMC trail that needs brushing and/or blazing this season, please let us know.



Bob Drescher and Dwight Bradley, scouting conditions on Lowe’s Path; Chris Campbell photo.

Sun Mon Tue **Wednesday** Thu Fri **Saturday**

			July 5 Gulfside, 2.2 mi (meet: Appalachia)			July 8 Israel RP-1, 1.0 mi (Bowman)
			July 12 Monaway, 0.6 mi (Appalachia)			July 15 Israel RP-2, 1.0 mi (Bowman)
			July 19 RCF, on Hill 1.7 mi (RCF trailhead)			July 22 Israel RP-3, 1.0 mi (Bowman)
			July 26 Starr King, 2.6 mi (Rte. 2, Jefferson)			<i>[Library book and bake sale]</i>
			August 2 Ed. Col Cutoff, 0.5 (Jeff. Notch Rd.)			<i>[Community Forest Day]</i>
			August 9 Israel RP-4, 1.0 mi (Bowman)			August 12 A trail N. of Rte. 2 (TBD)
			August 16 Israel RP-5, 1.0 mi (Bowman)			<i>[Firefighters’ breakfast, RMC Annual Picnic]</i>
			August 23 TBD, rain day			August 26 TBD, rain day

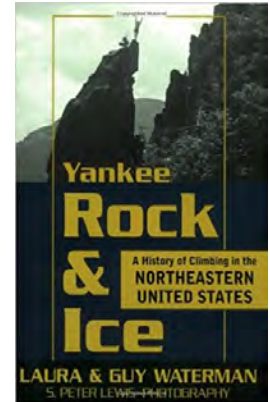
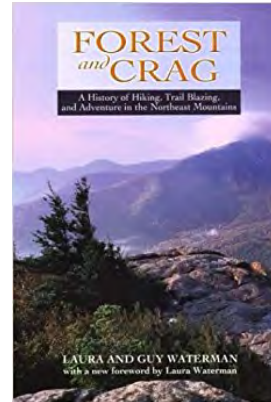
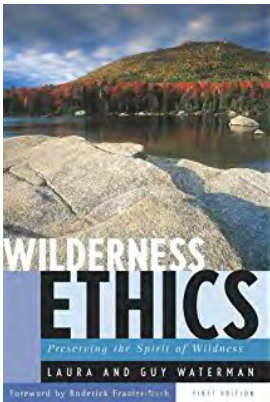
VOLUNTEER WORK TRIPS CALENDAR

Trips are scheduled during July and August; no trips on three Saturdays when other events are scheduled. Miles indicated are for trail work area, not travel to it. Work is brushing and blazing, except trails assessment on Gulfside and Starr King, and brushing only on Edmands Col Cutoff.

Waterman, continued from first page

Guy battled depression during his life, and died of suicide from hypothermia atop Mount Lafayette on February 6, 2000, one of the coldest nights of that winter. His story is documented in Good Morning, Midnight by New York Times Magazine writer Chip Brown. Laura's own book, Losing the Garden, is the heartfelt story of their decades together homesteading, exploring, and ticking off challenging technical climbs and demanding backcountry bushwhacks year-'round in the New England mountains.

Many RMC'ers have fond memories of Guy and Laura. I recently caught up to Laura at her home in East Corinth, Vermont, to hear what she's up to these days. Here's our interview.



Doug: There's renewed interest these days in the books you and Guy wrote. A second edition of Wilderness Ethics came out in 2014, and Backwoods Ethics was reissued as The Green Guide to Low Impact Hiking and Camping, last year. Why do you think there's been a resurgence of interest?

Laura: I'm not altogether sure why there appears to be a resurgence. I think that changing the title of Backwoods Ethics to The Green Guide reflects an attempt to catch 21st century hikers, those new to hiking. There certainly are a lot more folks out there so perhaps the market is good for selling hiking books!

A lot of RMC members have a copy of Forest and Crag. It's become a bible of sorts for New England hikers since it first came out in 1989— a must-have reference that's filled with great stories, including an entire chapter on Randolph. It's also being reissued— can you tell us how that happened?

Laura: The AMC originally published Forest and Crag and it looked like they might release a third edition. I was happy with that, but things were moving too slowly for my agent and so to pick up the pace, we sent the book to a few university presses. SUNY (State University of New York) Press jumped on it, and they were able to serve the book in ways AMC Books could not. Frankly, I think AMC might have felt relieved to have the project off their hands. It's such a big book!

For a long time now, there's been a close connection between RMC and you and Guy. Why do you think that is?

Laura: My gosh! RMC is such a great club. I can't imagine any group that takes better care of their mountains, and it shows in the kind of trail work they embrace and the love they relish on their camps. All you have to do is spend five minutes with Judy Hudson's Peaks and Paths and you know what the Northern Presidentials mean to generations of RMC'ers.

What Guy and I especially admired about the RMC is how the club has adapted to change, yet has maintained the highest of ethical and stewardship practices.

RMC's close connections to you and Guy involved more than just Guy caretaking Gray Knob. The club was an early supporter of the Waterman Fund. In memory of Guy, RMC accepted gifts to help start the Fund, before the Fund was set up as non-profit. How is the Waterman Fund doing these days?

Laura: Thanks for asking about the Waterman Fund. I couldn't be happier with where we are now. I believe our influence is expanding. Keep the Whites Wild asked for our help with the recent Cog Railway issue, and Senator Jeb Bradley's commission to study and recommend improvements to New Hampshire hiking trails contacted us also. We're really excited to be publishing with University Press of New England (UPNE) an anthology of our winning essays from our annual essay contest. It's called New Wilderness Voices and the publication date is July 4th. Then, every year we get to support exciting and worthy alpine trails, education, and research projects with our grants. These are at the heart of our works, and it's a very great honor to play a stewardship role in our precious alpine world.

What's a typical day like for you now? Are you still hiking?

Laura: My typical day? It starts out with early morning hours spent at my desk, mainly on writing projects. Since I thrive on routine, the afternoons are given over to gardening in the snow-free months, walking (or snowshoeing) any time. As for mountains, there are some pretty nice 3000-footers near me of which I can make the rounds. I prize, in a way that I hadn't before when Guy and I were climbing regularly, reaching a summit, and soaking in the view of mountains to the horizon, especially as most of these summits are old friends.

Lead an RMC Trip this Summer

By Barbara Cutter and Brian Roberts

Hey hikers! Summer is almost here. It's time to start planning the RMC summer trips, so here it is: the FIRST CALL for trip leaders. All are invited to lead a hike (or perhaps a canoe trip, bike ride, bird watching or artistic expedition). If you can hike, you can lead a hike! Trips are scheduled for Tuesdays and Thursdays between July 4th and the end of August, and we are looking for a mix of shorter/easy hikes and longer/more challenging trips. While many would-be trip



At Moose Brook State Park. E. Tucker photo.

leaders wait until the 4th of July Tea to sign up, we encourage you to beat the rush and sign up as soon as possible – especially for the July 6, 11 and 13 dates so we can get them listed in the Randolph Weekly. If you have an interesting trip in mind but can't do it on a Tuesday or Thursday, let us know and we'll try to make it work. To sign up, or for more information, please contact either of the trip co-chairs: Barbara Cutter, (319) 290-4404 and cutter.barbara@gmail.com, or Brian Roberts, (319) 290-4406. Thanks in advance for volunteering!

Trails, continued from page 4

On Memorial Day weekend the crew arrives at Stearns Lodge, and following orientation and training they will begin patrolling to remove blowdowns and clear waterbars. In early June, Benzo Harris and former Field Supervisors Ben Lieberson and Curtis Moore will provide training in rock work and erosion control, before the crew begins our major summer project on the Israel Ridge Path on June 19. Covering nine worksites and 2.2 miles up to the junction with the Emerald Trail, this project will include building rock staircases, replacing water bars, trail hardening and replacing two wood ladders. The work is funded by a grant (our largest-ever trails grant) from the NH Recreational Trails Program and RMC matching funds, along with required volunteer hours. Although the crew will be on the Israel Ridge Path almost the whole season, we also hope to work on the new Rollo Falls Trail towards the end. As always, we are grateful for the support and funding from our partners in both the Randolph Community Forest and the WMNF. We hope you'll come out to see the crew in action (don't hesitate to bring them cookies!) and appreciate the value of their work on our trails. Another way to help out the crew is hosting a Sunday night "Feed the Crew" dinner - a great way to swap some "stories" and show how much we all care about the trails. We hope you enjoy our wonderful trail system this season. See you out there!



A repair project for 2017: a broken bog bridge on the Short Line. Chris Campbell photo.

Trails Assessments

By the RMC Trails Committee

The Trails Committee has submitted for USFS review our the trail assessment of the Short Line, which calls for about 18 weeks of crew/volunteer work at a cost of \$85,200. In June, we will apply for a 2018 RTP grant to fund about nine weeks of crew/volunteer work on Amphibrach at a cost of \$44,000. We will also submit for USFS review our trail assessment for Lowe's Path totaling about 24 weeks of crew/volunteer work at a cost of \$112,800. This summer we'll be assessing the Starr King Trail and the 2.2mile section of Gulfside, the RMC-maintained section of the Appalachian Trail, in order to seek out funding for the work needed on all these trails. As you can see, sustaining the RMC trail network is quite a challenge, both in terms of volunteers and funding.

As the trail crew has taken on the all the technical work and "heavy lifting", we've come to rely on volunteers for basic trail tending like brushing and blazing. Knowing that most grants require a significant number of volunteer hours to be fulfilled, we encourage you to help take care of these amazing trails. It's an opportunity to enjoy some time with family and friends and help maintain our tails.

Funding trail work continues to be our biggest concern. Our trail assessments represent the total amount of work to the. It's not realistic to expect that all this work will get done in the near term, but the trail sections that are most eroded and degraded need our attention. While we have been successful in securing funding, occasional significant shortfalls in funding threaten our trail system. The RMC's trail maintenance program enjoys a good reputation, but competition for funding is increasing, some grant programs focus on unique projects, rather than the standard trail work that we need to fund, and federal support may decrease. Know that the trails committee and the Board will continue to work hard to maintain the RMC trail system. To this end, we aim to establish more secure funding for RMC trails and hope you will contribute toward this important goal.

Treasurer's Report*By Kathleen Kelley*

	Administration	Development	Camps	Stearns	Trails Grants	Trails	Total	2017 Budget
Revenue:	\$3,001	1,012	7,242	0	0	0	11,255	\$135,614
Expense:	1,478	1,265	6,516	818	0	125	10,203	\$136,891
Revenue over Expense	1,523	(253)	726	(818)	0	(125)	(1,277)	

The above presentation of the quarterly Treasurer's report (showing actual revenue and expense through the end of Q1 of 2017) is different from previous newsletter issues and from the version sent in the annual appeal letter in February. At the April meeting, the board of directors accepted my recommendation that we organize this information in a way that more clearly shows the revenue and expenses associated with each of the club's "programs", which are represented in the six columns to the left of the total. This will be particularly helpful in managing the finances of the trails program, which typically includes grants from outside sources who require reporting of our use of the grant funds and of our own matching contribution.

Update on the Mt. Madison Fund and the Mt. Crescent Society*By Randy Meiklejohn, Planned Giving committee chair*

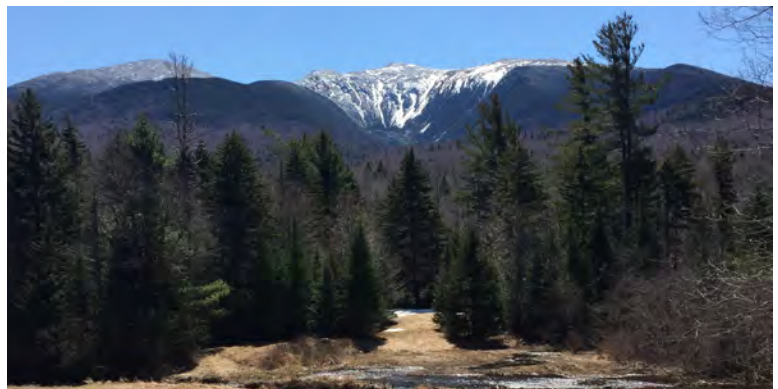
Would you (or another family member) consider including the Randolph Mountain Club in your will or estate plans? The RMC Planned Giving Committee would be happy to speak with you, and can offer information and assistance as you plan – for your future, and the future of the Club. One hundred seven years old in 2017, the RMC has already had a longer run than any one of us. What might we all do together to help it carry on? Some of your fellow members and well-remembered friends, whose names appear below, have begun to answer that question. Would you like to join them?

Since their establishment by the RMC directors in 2015, the new Mt. Madison Fund and the associated Mt. Crescent Society have both grown steadily, building a resource of funds and a fellowship of remembrance for the Club and for Randolph. Both are programs of the Planned Giving committee, whose membership and contact information appear on this page.

The **Mt. Madison Fund** is a permanent fund for bequests and memorial donations, and its purpose is to provide financial support for the RMC and its camps and trails. Additions to the Fund are through bequests and other planned gifts when they are received, and through each year's memorial donations. Amounts of all bequests and donations are confidential.

The **Mt. Crescent Society** lists the names of those individuals who have made bequests or planned gifts, or in whose memory donations have been made; thus it includes both members who have passed away, and those who yet remain among us. As of the publication date of this newsletter, the Society members are:

Jim Baldwin	Jamie Maddock
Harriet Baldwin	Sue Maddock
Eleanor Barschall	Doug Mayer
Peter Brockett	Jim Meiklejohn
Ben Campbell	Randy Meiklejohn
Chris Campbell	Scott Meiklejohn
Ann Cutter	Ben Phinney
Louis A. Cutter	John Phinney
Martha Gellens	David Ruble
Peggy Grant	Gaye Ruble
Will Hartman	Jenn Scarinza
Al Hudson	John Scarinza
Judy Hudson	Jan Wiranowski
Kate Hudson	



The Moose River in flood, and King Ravine, from the Cutters' Echo Cabin, in April. R Meiklejohn photo.

At the RMC website, you can find more information at the Planned Giving page, including a sample letter notifying the Club of a bequest intention, and sample language for inclusion in your will (in consultation with your attorney). You may also e-mail the Planned Giving committee through a link on the page to the address preserve@randolphmountainclub.org; or contact any of the committee members, who include Randy Meiklejohn (chair), Kate Hudson, Jamie Maddock, Ben Phinney or John Scarinza. We look forward to hearing from you.

RMC Website and Merchandise

Jeff Smith / Michele Cormier

Head to the RMC website year-round for **new memberships** or **membership renewal**, **merchandise** and more. Some small items appear at right on this page; more at the website!

Look for a new RMC t-shirt for 2017, in soft cotton with the historic Roy Woodard “hiker guy” artwork on the back!



Above is the website homepage; navigation is by the trail signs at left and right. Go to **STUFF WE SELL** for merchandise; look for events and trips under **ABOUT THE RMC**.

To join or renew, use the **Quick Links** at center of page.

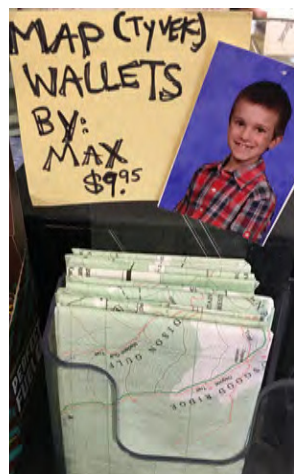
Our website: www.randolphmountainclub.org.

For **membership** or **merchandise** you may pay with **Paypal**.

RMC Map Wallet

Notes and photo for this article by Matt Bowman

The beautiful new 2016 edition of the RMC trail map is printed on Tyvek; likewise, the superseded 2005 map is on the same long-lasting sheet material, and the Club had some of these left over when the new map went on sale. Does this look like a business opportunity for someone?



Max Bowman certainly thought so. Max, age 11, is a fifth grader with outstanding origami skills, and he has been making and selling origami wallets for about two years. In early 2017, his RMC map wallets began appearing at the White Mountain Café in Gorham, where they have been selling briskly, but stocks are getting low; by now he has folded the last of the old maps. Get yours now!

“The Other Mountain Club”

Follow this link to an article profiling the RMC in the June 2017 issue of *New Hampshire Magazine*:

www.nhmagazine.com/June-2017/The-Other-Mountain-Club/

Welcome new members!

Joined November 2016 – April 2017

Lynne & Tim Ainsworth, Loudon NH

Paul Robie, Northport ME

Greg Bell, Gray ME

Peter Simpson, Wrentham MA

John Loughlin, Ossining NY

Brian Threlkeld, Portland ME

James Langone, Everett MA

Jamie Salamone, Stow MA

Danielle Normand, Manchester NH

Colleen Schnack, Jamestown RI

Denise Haskins, Lakeville MA

Scott McGrath, Wilmington MA

Alice Puccio, Somerville MA

David Kwiatkowski, Weston MA

Mary Trafton, Montpelier VT

Christine Lewis, Andover MA

Susan Dionne, Derry NH

Susanna Justice-Fahey, Beverly MA

Robert Lavigne, Franklin NH

Robert Lennon, Andover MA

Erik Radack, Santa Fe NM

Eric Kintner, Westford MA

Kaila Bachman, Somerville MA

Luke Dewees, Irasburg VT

Robert Dewees, Irasburg VT

Michael Thomas, Lebanon NH

Thomas Simunovic, Newton MA

Brian Ralphs, Simsbury CT

Thomas Garrahan, E. Sandwich MA

Chris Fegela, Concord MA

Chris Williams, Meredith NH

Alvaro Marques, Hudson MA

Ronald Sidgreaves, Springfield MA

June Cormier, Candia NH

John Matthews, Sarasota FL

James Robertson, S Glastonbury CT

Brian Chase, Worcester MA

Dan Sperduto, Canterbury NH

Mike Thompson, Fairless Hills PA

David Stowe, Gilford NH

Eric Svenson, Manchester NH

Geoffrey Hyatt, Boston MA

Thomas Liu, Newburyport MA

Timothy McAndrew, Somerville MA

Jonathan Inz, Bedford MA

Steve Woodward, Haverhill MA

William Phinney, Basking Ridge NJ

Sarah Phinney, Basking Ridge NJ

Laura Alexander, New London NH

Camps, continued from page 5

have developed the five-year plan and will begin the process of seeking the necessary permits and approvals as well as funding for these important camps infrastructure projects.

The RMC Camps Committee wants to thank the club's Board of Directors and the membership for their continued support of this program, and we encourage one and all to make a visit to the camps this coming season.



Winter visitor at Gray Knob. Carl Herz photo.

Mt. Crescent Society Profile

The RMC's Mt. Crescent Society recognizes those individuals who have made a bequest or other planned gift to the Club; among them are Jim Baldwin (1920-2014) and Harriet Baldwin (1923-2013), longtime Club members and summer residents of Randolph. Thanks to Sara Fauquier and Ted Horton for the notes for this profile.



Jim and Harriet together at a trailhead gathering before an RMC hike, 1990s. Photo courtesy of Sara Fauquier.

Jim and Harriet Baldwin spent over forty seasons in the White Mountains, active and involved in the Randolph Mountain Club, and in the Randolph Church and the Randolph Foundation as well.

Their journey to Randolph began back in the 1940s, when Wellesley College president Mildred McAfee became the second wife of Douglas Horton. Mildred's niece Harriet Brown was a Wellesley *student*, and in traveling with her aunt she came to know the Hortons as well, including Douglas' son Alan, a Princeton graduate. On one occasion she sought his opinion: what could he tell her about a certain Princeton *man* who interested her? Alan could tell her a great deal; he and Jim Baldwin had been good friends at college, and they remained so and their families stayed close over the decades of Harriet and Jim's life together.

During the Baldwins' time here, their good works and good natures shaped the lives of their fellow Randolphians, on our hikes, at social events, and especially at the Annual Picnic and Charades. In their final years, they lived at the Kendal retirement community in Hanover. Their will included a bequest to the Randolph Mountain Club, and they were among the inaugural members of the Mt.

Crescent Society when it was established by the RMC board of directors in 2015. Thanks to their daughter Sara Baldwin Fauquier,

Jim and Harriet's generous gift to the Club was received in September 2016, and has been added to the Mt. Madison Fund.

Have you included the RMC in your estate plans?

For more information:

www.randolphmountainclub.org/preserve