



# Randolph Mountain Club Newsletter

The mission of the Randolph Mountain Club is to promote the enjoyment of the Randolph area through hiking, trail development and maintenance, upkeep of camps and shelters, and the sharing of the collective knowledge of its members.

June 2019



## LEAD AN RMC TRIP THIS SUMMER!

by Mary Minifie, Trips chair

Do you love birds or ferns and fauna? Can you think of a special pond or waterfall in the White Mountains where you love to go? Please consider leading an RMC trip this summer. Volunteers lead a trip every Tuesday and Thursday during July and August. We have easier, shorter trips on Tuesdays and trips that are more strenuous on Thursdays.

Since my coming to Randolph in 1971, the RMC trips have been the most important way I have learned about the trails and all the beautiful places. It is also a great way to meet new people. It is so important we keep this tradition going, so that many others will get to know and love the White Mountains as we do. Please sign up to lead a trip! You will need to include

*continued on page 8*

Mary Minifie and Wendy Walsh, on top of Mt. Osceola, with Eli and Thor, in 2017. Not pictured: Thor's porcupine. Courtesy photo.



## WHITE MOUNTAIN TRAIL COLLECTIVE

by Bob Drescher, Trails co-chair

The White Mountain Trail Collective (WMTC), now in its second year, again hosted the annual "Trail Gathering" at Plymouth State University on April 20, 2019, with RMC President Jamie Maddock, Trails Chairs Bob Drescher and Benzo Harris and Trails Committee member Jeff Wilson attending, along with some eighty other trails folks from thirty-seven organizations, to discuss the WMTC's Crawford Path Project and other ways of improving and initiating new approaches to trail work. Cristin Bailey, USFS Crawford Path 2018 Project Manager, (and RMC member and former director) reviewed the Collective's results from last season, and Matt Coughlan, Crawford Path 2019 Project Manager, spoke about the upcoming work for this summer. Additional comments from the

*continued on page 7*

Map of the White Mountains, with the logos of sixteen constituent trail-maintaining organizations around it. Courtesy White Mountain Trail Collective.

### Also in this issue:

Summer Social Events .....	page 3
Meet the Trail Crew .....	page 4
Meet the Camp Caretakers.....	page 5

Volunteer Work Trips Calendar .....	page 6
Treasurer's Report .....	page 10
Planned Giving Report .....	page 10

**Randolph Mountain Club 2018-2019**

Officers, Directors,  
committee chairs and honorary members

**President** Jamie Maddock, South Berwick ME

**Vice President** Kate Hudson, Pelham MA

**Treasurer** Kathleen Kelley, Randolph NH

**Secretary** Randy Meiklejohn, Brookline MA

**Other Directors:** Pete Antos-Ketcham, Starksboro, VT  
Dwight Bradley, Randolph NH  
Bob Drescher, Barnstead NH  
Benzo Harris, Portland ME  
Chris Hawkins, Randolph NH  
Carl Herz, Bedford MA  
Bev Jadis, Randolph NH  
Ben Lieberman, Boston MA  
Jenn Scarinza, Randolph NH  
Franklin Stone Wenk, Brooklyn NY  
Wendy Walsh, Randolph NH

**Camps:** Pete Antos-Ketcham

**Trails:** Bob Drescher, Benzo Harris

**Social Events:** Jenn Scarinza, Franklin Stone Wenk

**Trips:** Mary Minifie

**Merchandise:** Michele Cormier

**Planned Giving:** Randy Meiklejohn

**Membership:** Michele Cormier

**Safety:** Bill Arnold

**Stearns Lodge:** Paul Cormier

**Work Trips:** Wendy Walsh

**Newsletter:** Randy Meiklejohn

**Webmaster:** Jeff Smith, Jenna Maddock

**Archivist:** Al Hudson

**Historian:** Judy Hudson

**Cartographer:** Jon Hall

**Radios:** Bill Arnold

**Honorary**

**members:** Bill & Barbara Arnold  
Paula Bradley  
Al & Judy Hudson  
Edith Tucker

[www.randolphmountainclub.org](http://www.randolphmountainclub.org)

*The Randolph Mountain Club is a diverse organization, committed to equal opportunity in employment and program delivery. The RMC prohibits discrimination on the basis of race, color, national origin, sex, religion, age, disability, sexual orientation, gender identity, gender expression, military status, veteran status, income level, political affiliation and familial status.*

*From the President ...*

Another Memorial Day weekend, and the start to another summer season for the RMC. It has been a cold wet spring, and last week we had snow at the camps, while rivers continue to run quite full. As we have started patrolling the trails, it looks like we have come through the 2018 - 2019 winter in good shape. There is the usual occasional blow-down, and the strong winds have pruned many branches from the trees, but by and large the trails are passable.

This season our trail crew will be spending time on the Starr King Trail, one of RMC's "outlier" trails over in Jefferson. As more and more hikers are doing the Four-Thousand Footers (our trail leads over Mt. Starr King to Mt. Waumbek, barely on the list at elevation 4,006'), the trail is getting quite eroded. Most of the work will be on the lower reaches of the trail. Once again we have been awarded a RTP grant that pays for half of the work (*see Trails report*). The RMC must match the dollar value of the grant, but fortunately we can match it in volunteer labor, which will be mainly brushing and blazing. We did this last year on the Short Line, with great success. So take a look at our volunteer work trip schedule (*page 6*) and see if you can join us on one of the trips. Most are on Saturdays this year, with a handful on Wednesdays.

For the remainder of the summer, the crew will be spending a week outside of Randolph on the Crawford Path project again, and working on a number of smaller projects as they pop up. They will also receive additional training at workshops on trail building provided by the White Mountain Trail Collective (*page 1*). For the following year we are looking at making trail improvements on the Gulfside, in the RMC-maintained section of the Appalachian Trail (between Edmands Col and Madison Spring Hut) and in the Randolph Community Forest on the Cook and Ice Gulch paths.

When you're not out on the trail, I hope you'll join the RMC at one of our many summer social events (*page 3*). There are always new RMC members and new residents to meet, and I hope you'll welcome them to town and to the RMC.

Some other club "meeting places" to check out are the RMCs Instagram and Facebook pages. RMC directors Kate Hudson and Carl Herz are adding new content and will continue to do so throughout the year. They are also collecting pictures, so feel free to send us your photos or hashtag them **#randolphmountainclub**.

Looking forward to seeing you soon in Randolph!

*Jamie Maddock*

Jamie and Guyot, at Salmacis Fall on the Brookside,  
August 2018. R. Meiklejohn photo.

## Summer Social Events

by Jenn Scarinza and Franklin Stone Wenk

Thursday, July 4th: Please come kick off the season at Mark and Katie Kelley's wonderful barn at 98 Randolph Hill Road at the annual **RMC Fourth of July Tea**. Join us from 3:00 to 5:00 PM for punch, iced tea and delicious baked goods. Catch up on the latest RMC news, meet this year's trail crew and caretakers, check out our merchandise, sign up to lead a hike and connect with friends, old and new. Please help us bring together all the RMC's generations at this event, and contact Jenn or Franklin (*phone numbers below*) if you or a friend or family member would like assistance with stairs, a ride up to the barn, or a nearby accessible parking space.

Thursday, August 1st: The **RMC Gourmet Hike** returns to the Pine Mountain ledges. Meet at Randolph East at 10:00 AM; we will carpool to the trailhead and ascend via the Ledge Trail. Thanks to the Horton Center, a shorter ascent will be available for those who wish it. Bring your favorite transportable summer food item to share for the picnic blanket potluck!

TBD, likely week of August 12th: Don't miss out on the popular summer **RMC Gourmet Dinner at Libby's Bistro** in Gorham, 6:00 PM. Many thanks to owner/chef Liz Jackson for continuing to welcome the RMC. Great dining and our fabulous silent auction to support the club! Space is limited - to reserve your spot, contact the Social Events Chairs (below).

Saturday, August 17th: The 107th **RMC Annual Picnic and Charades**, noon to 2:00 PM at the Mossy Glen Amphitheater off of Durand Road. Bring a picnic lunch and your very own cup; punch provided. Rides up to Mossy Glen are available. In the event of rain, the festivities will be moved to the Randolph Town Municipal Bldg., Pinkham "B" Road.

And that evening, Saturday, August 17th, from 7:30 to 9:30 PM, we will hold a traditional **Square Dance** in the Beringers' barn at Sugar Plum Farm, 232 Randolph Hill Road. Calling provided by Dudley Laufman and music by Paul Cormier and friends. All dances taught, beginners encouraged! Many thanks to Marie Beringer for her ongoing sponsorship; your additional donations are gratefully accepted, to cover the cost of this super fun event.

Watch the *Randolph Weekly* all summer for more details about each of these events. Would you like to help out by volunteering to welcome people or serve punch at the Tea, lead your section of the Charades, or donate a Gourmet Dinner raffle item or sponsor a crew member for the dinner at Libby's? Please contact Social Events Co-Chairs:

Jennifer Scarinza, [jbarton@ttlc.net](mailto:jbarton@ttlc.net); (603) 631-0870 or

Franklin Stone Wenk, [franklin@stonewenk.com](mailto:franklin@stonewenk.com);  
(917) 597-1848.

See you this summer!



The RMC at social events this spring. Top, Tim Mather, Beth Krusi and Sandy Harris, downstairs at Libby's at the fundraising dinner on May 11. Above, the Cabin Fever Reliever square dance at Town Hall in March.

## RMC Annual Meeting

by Randy Meiklejohn,  
Club Secretary

The 2019 Annual Meeting of the Randolph Mountain Club will be held at the Randolph Town Hall on Saturday, August 10th at 7:00 PM.



Following a business meeting for officer and committee reports, and for election of new directors and a president, there will be a presentation by a guest speaker Marianne Borowski, the founder of the Cross New Hampshire Adventure Trail, which includes Randolph's Presidential Rail Trail (more information on page 9). Light refreshments will be served, and the public is welcome to attend.

## Trails Report & Meet the Trail Crew

by Bob Drescher and Benzo Harris, Trails co-chairs



**Justin Taylor**  
Framingham, Massachusetts  
Field Supervisor

Since winter appeared a bit earlier than usual in 2018, we're even more anxious to get started on the work for the 2019 summer season. The crew will be led by Field Supervisor Justin Taylor, now in his 5th year with the RMC. Joining him will be returning crew members Brian Behr (5th year) and Maryka Gillis (3rd year) and Sam Marshall (2nd year). We welcome Bridget Ackerly, McKenzie Imhoff, Joey Schilke, Haylee Norton, and Owen Desroches to the crew.

Memorial Day weekend is the start of the trail crew's Orientation, which will include ax training, tool and safety training, along with instruction in trail work skills. Former Field Supervisor Ben Lieberman, Trails co-chair Benzo Harris and Trails committee member Jeff Wilson will be assisting with the training program, along with additional support again from

*continued on page 6*



The Bee Line,  
west end of Durand Lake.  
Bob Drescher photo.



**Bridget Ackerly**  
Portland, Maine  
1st year



**Brian Behr**  
Tamworth, New Hampshire  
Crew Leader



**Owen Desroches**  
Roslindale, Massachusetts  
1st year



**Maryka Gillis**  
Minneapolis, Minnesota  
Crew Leader



**McKenzie Imhoff**  
Burlington, Vermont  
1st year



**Sam Marshall**  
Manchester, New Hampshire  
2nd year



**Haylee Norton**  
Stratford, Connecticut  
1st year



**Joey Schilke**  
Eatontown, New Jersey  
1st year

## Camps Report

by Pete Antos-Ketcham, Camps chair

This past winter, RMC participated in a new initiative in developing a snow analysis pit at Gray Knob in support of the USFS Mount Washington Avalanche Center. Each day, along with their regular weather recording duties, the caretakers conducted snowpack analysis and shared this information to help improve avalanche forecasting on the White Mountain National Forest. The caretakers, Merike Youngs and Charlotte Cadow, enjoyed participating in this program and felt it helped them to be better in touch with environmental conditions that they could use to help educate winter travelers in the area.

In March, veteran RMC caretakers Kevin Ross and Justin Taylor took over at the camps until the end of May, the beginning of the summer season. For the summer, our two new caretakers both each bring several seasons of experience at the AMC huts, and you can read about them on this page. I hope you'll look for them when you visit the camps.

Aside from routine maintenance at the four camp buildings (Crag Camp, Gray Knob, the Log Cabin and the Perch), we will undertake some projects to improve our operations up on the mountain. We already have a solar-panel system at Gray Knob, and this year we'll add some features to help increase our ability to charge batteries that can then be used for effective, non-fire-based, lighting for both camps. Also at Gray Knob we will be working to upgrade the woodshed to better protect our annual supply of bio bricks from moisture. John Tremblay will work with us to make these upgrades.

I thank the Board for their continued support of the camps program. As always, if anyone has any questions on this report or ideas and suggestions for the camps please feel free to contact me, [rmccamps1@gmail.com](mailto:rmccamps1@gmail.com).



The Log Cabin. Right, former caretaker Lauren Anzalone heading down with a generator. C. Herz photos.

## Meet the 2019 Summer Camp Caretakers

... in their own words ...

*Sara writes:* I grew up in Saco, Maine and studied Biology at the University of New Hampshire. I have been lucky enough to travel to some strange corners of the globe but can't help but return to the White Mountains. In the past I worked for the AMC Huts, and I cherish the unique opportunity to live and work in such a beautiful and humbling environment.

I look forward to representing the RMC as a backcountry resource for the community of people who make the effort to appreciate the shelters and trails. If I'm not out hiking, most likely you will find me in my natural habitat, on a sunny rock with a good book.

*Jesse writes:* I grew up in Nottingham, New Hampshire, spending time outside with friends and family. In the past few years, I graduated from school near the White Mountains, worked as a loon biologist, spent four seasons in the AMC huts department, and also worked in Maine's outdoor gear industry.

This will be my first season representing the RMC, and I'm excited to continue fostering a relationship with this wonderful mountain community. I'm looking forward to sunsets, reading, hiking new trails, connecting with guests and day-traffic alike, then composting their waste.



**Sarah Young**  
Gray Knob caretaker



**Jesse Carlson**  
Crag Camp caretaker



**Volunteer Work Trips, 2019**

*by Wendy Walsh*

<b>SATURDAYS</b>	RTM*	meet at:
June 22 Starr King	2.4	Jefferson
June 29 Starr King	4.8	Jefferson
July 6 Starr King	7.2	Jefferson
July 13 Howker Ridge	8.0	Randolph East
July 20 Howker Ridge	6.0	Randolph East
July 27 Howker Ridge	4.0	Randolph East
Aug. 3	<i>[Community Forest Day; no trip]</i>	
Aug. 10 TBD	TBD	TBD
Aug. 17	<i>[RMC Annual Picnic; no trip]</i>	
Aug. 24 Howker Ridge	2.0	Randolph East
Aug. 31 TBD or rain day	TBD	TBD
<b>WEDNESDAYS</b>	RTM	meet at:
July 10 Crescent Ridge	5.0	Durand Rd.****
July 24 EZ Way / Wood Path	2.3	Durand Rd.
Aug. 7 Cliffway	6.5	Appalachia
Aug. 21 Cliffway	6.5	Appalachia

*Notes about the meeting places:*

Appalachia: Park at Appalachia trailhead on Rte. 2, or at Ravine House site on Durand Rd.

Jefferson: Starr King Trail trailhead, or parking lot on Rte. 2

Randolph East: Trailhead parking on Pinkham B Rd.

Durand Road: At Durand Rd. trailhead of the trail

Volunteer work trips are every Saturday in June, July and August, except when other community events are scheduled, and on alternate Wednesdays in July and August. The work to do is brushing and blazing, on about one mile of trail, except EZ Way and Wood Path trip is almost two miles. For many trips we will walk in from the trailhead to the section where we'll start work, so the schedule indicates "round trip miles" (\*RTM), including walk in, trail work length, and walk back out. All trips start at 9:00 AM, except the longer trips (Howker Ridge) may start earlier. Please bring brushing tools if you have them, and work gloves; RMC will provide blazing supplies. First-time volunteers are welcome. Questions? Need more information? Not sure about the weather? Contact Wendy Walsh, (603) 401-7899, [wendy.walsh@unh.edu](mailto:wendy.walsh@unh.edu).



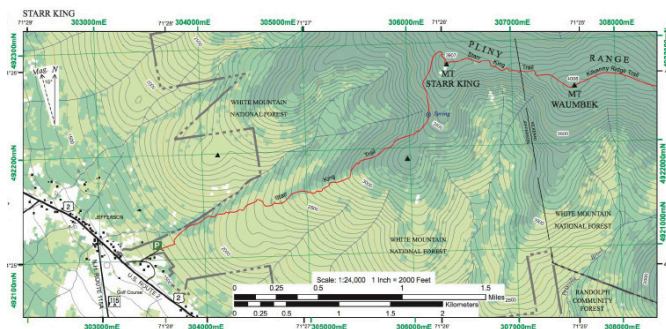
Trail volunteers Chris Durning and Amy Patenaude brushing on the Cook Path, 2018. Wendy Walsh photo.

*Trails, continued from page 4*

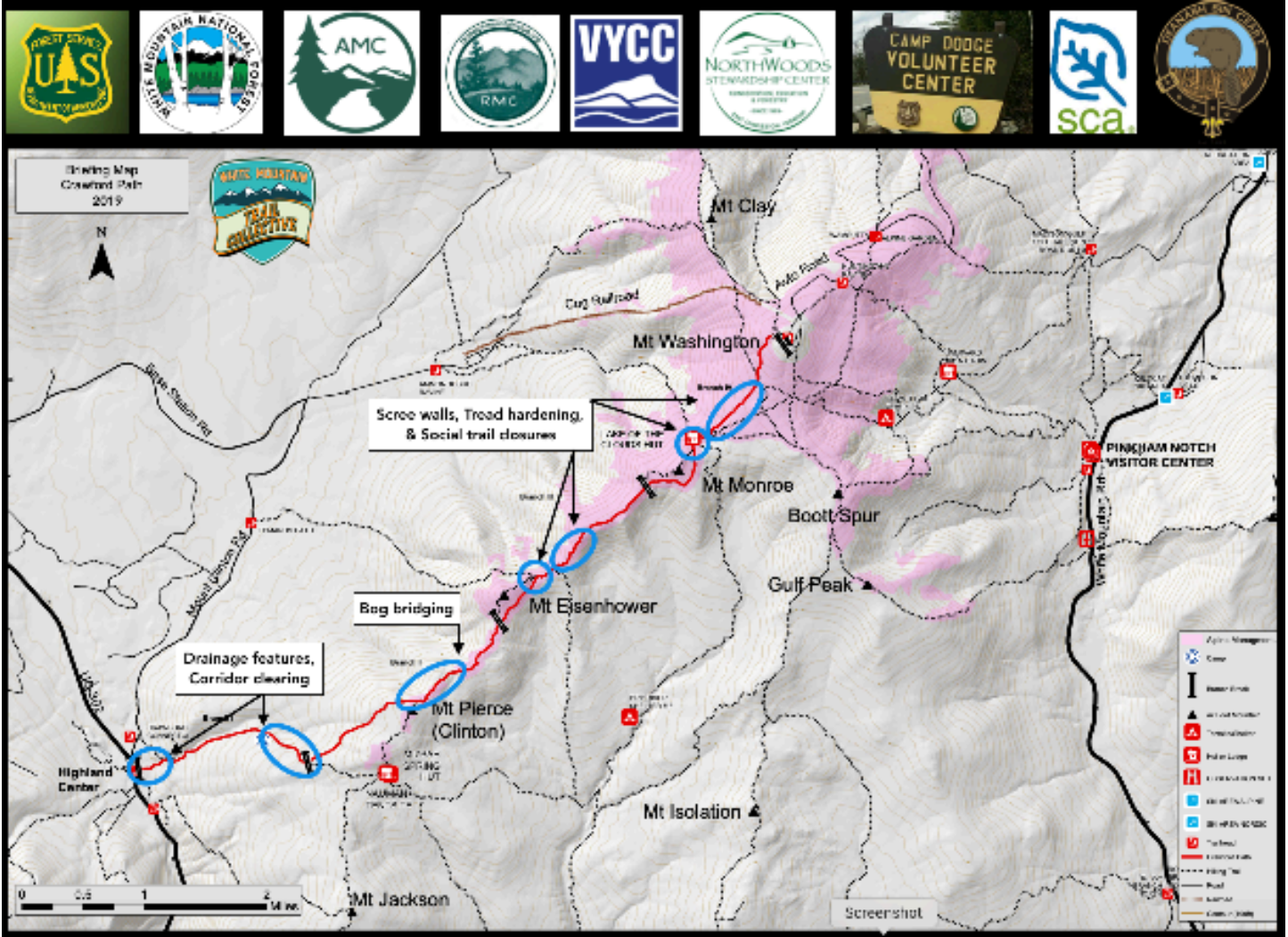
the White Mountain Trail Collective, offering rigging classes, along with some more specialized rock work skill sessions for all crews. Patrolling and clearing blowdowns will keep us busy through mid-June, when we'll start trail rehabilitation work.

The major project this season will be erosion control and trail hardening on the lower section of the Starr King Trail, with funding provided through a New Hampshire Recreational Trails Program (RTP) grant, the USDA Forest Service Cost Sharing program and the RMC. Replacing waterbars, installing side ditches and rock steps will keep the crew busy most of the season until moving over to the Crawford Path in August, where we'll continue our work from last season, participating in the White Mountain Trail Collective's efforts to restore this historic path as part of its bicentennial celebration in 2019.

As always, we are grateful for the Club's support, as well as the NH Bureau of Trails, the Forest Service, the Appalachian Trail Conservancy and the Randolph Community Forest Commission. Additional support comes from the many volunteers who help maintain our trails and whose volunteer work hours provide essential matching of outside grants.



Map of the Starr King Trail; detail from the 2016 RMC map. The distance from trailhead to Starr King summit is 2.6 miles.



*White Mountain Trail Collective, continued from page 1*

various WMTC committees, Linda Gray from the NH Charitable Foundation, Dr. Brian Eisenhauer of PSU and Dr. Jill Weiss, whose research connects trail maintainers, users and policy makers, were offered to support the collective approach to trail maintenance.

The WMTC was formed in recognition of the enormous backlog of trail maintenance in the White Mountains, and the tremendous effort required of each trail-maintaining club to attain annual funding. Also noted were the variations in trail work standards and the difficulty in obtaining professional training for the crews. As a potential solution to these problems, the collective impact model was adopted as the way to directly share knowledge and resources to achieve greater productivity, better-trained crews and ease the funding crunch. Since its inception over two years ago as a support organization, the WMTC has continued to grow due to participation of the trails and outdoor community. The Collective has achieved 501 c 3 non-profit status, with the organization’s funds managed by the NH Charitable Foundation. After relying on a volunteer director to get started, the Collective has hired an

Crawford Path project map, showing trail work areas and proposed improvements for summer 2019. Courtesy White Mountain Trail Collective.

executive director, along with a project manager for the 2019 Crawford Path Project. Following the RMC’s first season of collaboration with the WMTC, the board of directors invited representatives of the Collective to their October 2018 board meeting for a general Q&A session, and have agreed to continue working with them both in the field and in planning for future projects. More information about the Collective at [wmtrailcollective.org](http://wmtrailcollective.org).

This season’s RMC trail crew work on the Crawford Path, again largely funded by REI, will continue the repair and rehab work started by multiple trail maintainers last season (including the RMC’s crew) as a way of celebrating the 200th year of this historic path, and displaying the remarkable on-the-ground achievements of the Collective. The WMTC, as it did last year, will be providing several training sessions for all crews, and opportunities for volunteers to help with this collaborative effort.

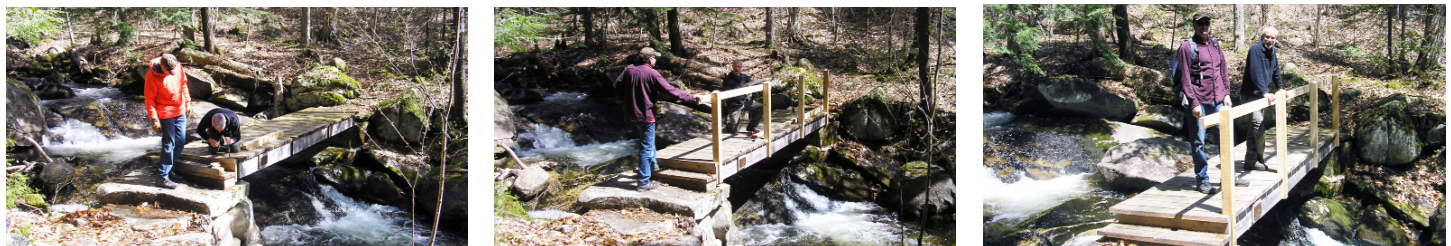
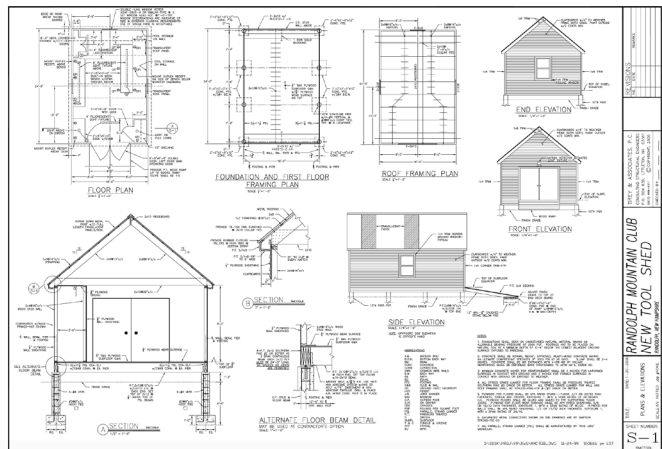
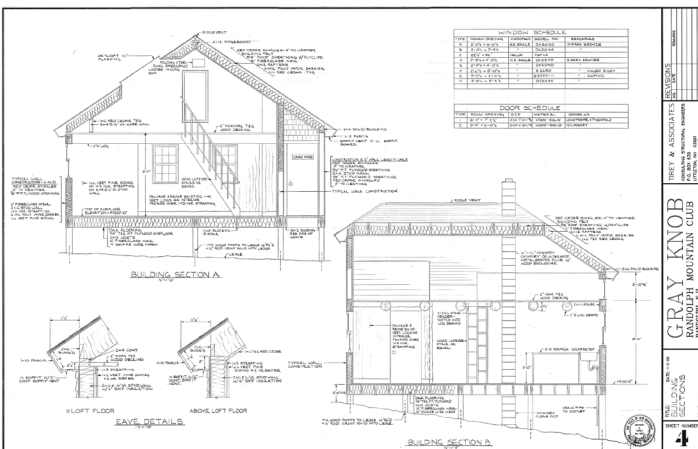
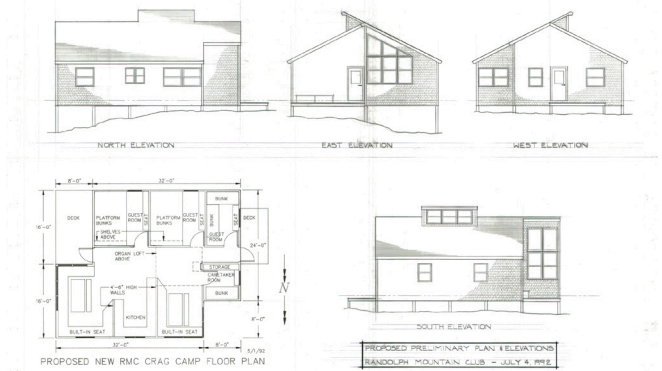
### Digitized Drawings for the RMC Archives

by Randy Meiklejohn, RMC secretary

Earlier this year, the RMC directors and the Archivist and Historian (Al and Judy Hudson) were contacted by Jeff Tirey, former RMC director and president (1985, 1990-92) and the designer of several of the club's buildings. Jeff is retiring this spring and closing his engineering practice in Littleton, and he thoughtfully offered high-quality digital scans of his drawings for the RMC. We already had paper copies of these drawings, but nothing in digital format. The decades since these drawings were created was the period in which most design professionals transitioned from hand drawings on paper or mylar to digital production using software.

On this page are some sheets from the new digital drawing collection. Clockwise from right: elevations and plan of Crag Camp, 1992; the complete design for the Goetze Tool Shed, 2000, located adjacent to Stearns Lodge on Cold Brook Road; and section drawings of Gray Knob, from 1988.

The new digitized drawings join the many other documents stored at the directors' FTP site, in cloud storage space hosted with the RMC website, including meeting minutes, newsletters, trail easement documents, our Forest Service permits for operation of the camps in the National Forest, deed and map of the Stearns Lodge property, and more.



RMC Trail volunteers Jeff Wilson and Tom Straub installing new railings on the Peeko Folsom Bridge, on the Bee Line crossing of Carlton Brook, May 2019. Bob Drescher photos.

#### Lead a Trip, continued from page 1

length of the trip, the height of the mountain and where and what time to meet on that day. All trips will be publicized through the RMC website, the *Randolph Weekly*, and at club events in the days preceding each trip.

We would especially like to have trips scheduled now for early July; there will also be opportunities at the 4th of July Tea to schedule one later in July or in August. For more information or to volunteer, contact Mary Minifie at [mary.minifie@gmail.com](mailto:mary.minifie@gmail.com).

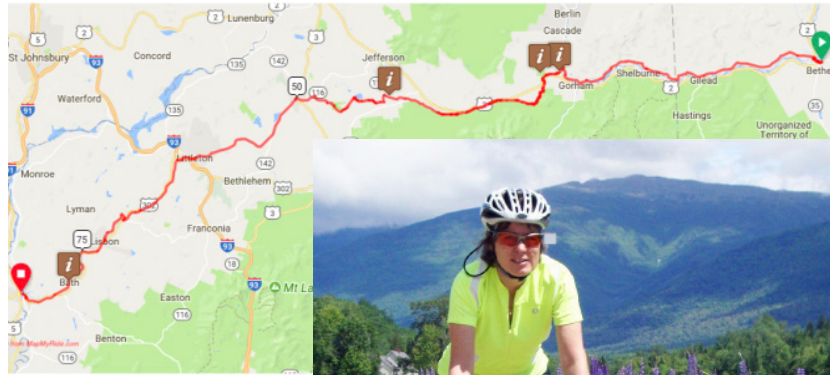




## Annual Meeting Speaker Profile

*from notes provided by Marianne Borowski*

The guest speaker at this year's Annual Meeting is Marianne Borowski, the founder of the **Cross New Hampshire Adventure Trail** (find it at [xNHAT](http://xNHAT.com), and [crossnewhampshire.org](http://crossnewhampshire.org)). The trail is an 83-mile scenic bicycle route that spans nine towns in New Hampshire and two in Maine. It strings together good cycling trails and roads, linking the Ammonoosuc Rail Trail, the Presidential Rail Trail and recreation pathways (Littleton Riverwalk, Bethel Pathway) via pleasant, scenic, dirt roads and paved roads. The route travels from Woodsville along the Ammonoosuc River through the villages of Bath, Lisbon and Littleton, then skirts the northern flanks of the Presidential Range through Whitefield, Jefferson and Randolph. It follows the Androscoggin River through the towns of Gorham and Shelburne, crossing the state line into Gilead, Maine and ending in Bethel. Currently the route consists of 31.6 off-road miles, 11 miles of dirt roads, 30.4 miles of quiet paved back roads and only a ten-mile section of paved state secondary road.



Above, the route of the Trail, from Woodsville to Bethel. Right, Marianne heading west on the Valley Road section, with Mt. Adams behind her. Courtesy photo.



A resident of Glen, NH, Marianne received an assistance grant from the National Park Service, Rivers and Trails Division, to help guide the development of the trail. In March she was awarded a "Local Grant" from the Tillotson Fund to support cartography and map printing, promotional items, publicity and trail signage. The focus for this year, with help from these sources, is to promote non-motorized recreation in the North Country. It is to spread the word about the xNHAT to locals for day trip enjoyment and to cyclo-tourists who want a multi-day adventure. The maps and signage are to help everyone have a good experience on the route and find the amenities they need (ice cream, lodgings, bike shop, restaurants, groceries, etc.).

The Cross New Hampshire Adventure Trail is a continuation of the Cross Vermont Trail in style and spirit. The Cross Vermont Trail ([www.crossvermont.org](http://www.crossvermont.org)) is a combination of rail trails, back roads, dirt roads and paved roadways that connects communities from Burlington to Wells River, Vermont, just across the Connecticut River from Woodsville, NH.

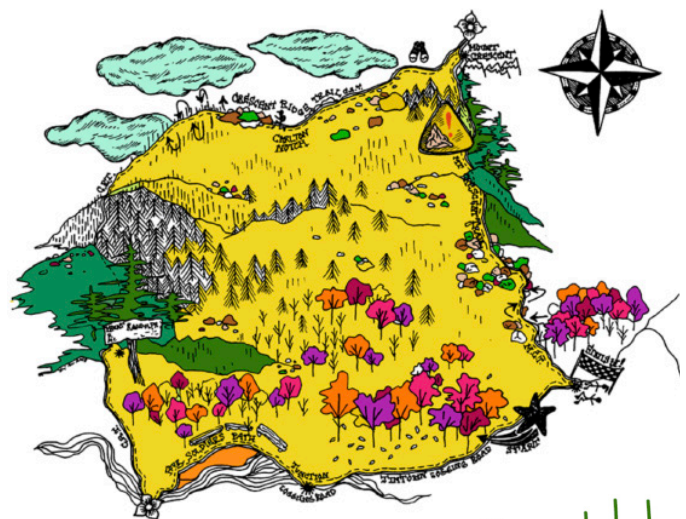
## Return of the Randolph Ramble

*by Doug Mayer and Jamie Maddock*

The Ramble returns! After a sabbatical year in 2018, the organizers of this Randolph community trail-running event have announced it will take place on Sunday, October 27.

Last featured in these pages in December 2016, the Ramble follows a ten-kilometer loop course (map at right) on the Crescent Range in the Randolph Community Forest. With steady growth in participation during its first three seasons in 2015 through 2017, it has come to attract elite trail runners from across New England, plus Randolph residents of many ages and levels of competitive intensity. The RMC, with responsibility for trail maintenance along most of the route, supports this initiative for recreation on the Community Forest, and is grateful to the organizers for the donations they've made regularly to the club from the event's net proceeds, and for including a "join the RMC" link this year at their website.

As fall approaches, look for updates about the Ramble on Facebook, and at [randolphramble.com](http://randolphramble.com).



Randolph  
Ramble

**Treasurer's Report***by Kathleen Kelley*

	Administration	Development	Camps	Stearns	Trails	Trails Grants	Total	2019 Budget
<b>Revenue</b>								
YTD 04/30/2019:	\$16,597	10,070	10,821	0	0	0	37,488	155,673
<b>Expense</b>								
YTD 04/30/2019:	3,445	2,449	12,470	1,532	0	0	19,898	150,479
<b>Net:</b>	13,152	7,621	(1,649)	(1,532)	0	0	17,590	5,194

The first four months are tracking nicely with the Board's 2019 budget. Revenues are at 108% of budget for this period, with more Camp Fees paid by non-members than budgeted. Expenses are at 105% of budget due to training of new Camp Caretakers. The trail crew has arrived and begun training so our payroll expenses will be greatest June through August. The pay of trail crew and caretakers has increased, which helps us recruit a strong team. In addition to wages, RMC will stock the pantry for the trail crew over the summer. We also have increased the funds for accounting services in the event that we hire additional bookkeeping services to handle payroll and accounts payable. The Salesforce app has been helpful in managing our membership, donations and merchandise sales.

**Update on the Mt. Madison Fund and the Mt. Crescent Society***by Randy Meiklejohn, Planned Giving committee chair*

Would you (or another family member) consider including the Randolph Mountain Club in your will or estate plans? The RMC Planned Giving Committee would be happy to speak with you, and can offer information and assistance as you plan – for your future, and the future of the Club. One hundred nine years old in 2019, the RMC has already had a longer run than any one of us. What might we all do together to help it carry on? Some of your fellow members and well-remembered friends, whose names appear below, have begun to answer that question. Would you like to join them?

Since their establishment by the RMC directors in 2015, the new Mt. Madison Fund and the associated Mt. Crescent Society have both grown steadily, building a resource of funds and a fellowship of remembrance for the Club and for Randolph. Both are programs of the Planned Giving committee, whose membership and contact information appear on this page.

The **Mt. Madison Fund** is a permanent fund for bequests and memorial donations, and its purpose is to provide financial support for the RMC and its camps and trails. Additions to the Fund are through bequests and other planned gifts when they are received, and through each year's memorial donations. Amounts of all bequests and donations are confidential. The Fund has already supported important projects for the RMC, mostly facility improvements at Crag Camp.

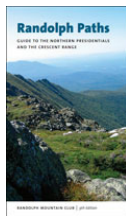
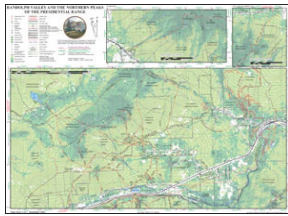
The **Mt. Crescent Society** lists the names of those individuals who have made bequests or planned gifts, or in whose memory donations have been made; thus it includes both members who have passed away, and those who yet remain among us. As of the publication date of this newsletter, the Society members are:

Jim Baldwin	Kate Hudson	Jenn Scarinza
Harriet Baldwin	Geoffrey Hyatt	John Scarinza
Eleanor Barschall	Jamie Maddock	Gail Scott
Peter Brockett	Steve Maddock	Jim Shannon
Ben Campbell	Sue Maddock	Silvia Shannon
Chris Campbell	Doug Mayer	Fran Smith
Ann Cutter	Jim Meiklejohn	Milton Smith
Louis A. Cutter	Meg Meiklejohn	Alice Tibbetts
Hank Folsom	Randy Meiklejohn	Sandy Tredinnick
Martha Gellens	Scott Meiklejohn	Andrew Tucker
Peggy Grant	Ben Phinney	Dick Upton
Will Hartman	John Phinney	Jan Wiranowski
Al Hudson	David Ruble	
Judy Hudson	Gaye Ruble	



Mt. Adams, from the Gulfside east of Edmands Col.  
Carl Herz photo.

At the RMC website, you can find more information at the Planned Giving page, including a sample letter notifying the Club of a bequest intention, and sample language for inclusion in your will (in consultation with your attorney). You may also e-mail the Planned Giving committee through a link on the page to the address [preserve@randolphmountainclub.org](mailto:preserve@randolphmountainclub.org); or contact any of the committee members, who include Randy Meiklejohn (chair), Kate Hudson, Jamie Maddock, Ben Phinney or John Scarinza. We look forward to hearing from you.



2016 RMC map, and *Randolph Paths*.



## RMC Merchandise

by Michele Cormier

Want to add some RMC flair to your next celebration? Consider these new merchandise items for 2019, and serve your guests in your best Randolph Mountain Club style. Below, six-inch-tall RMC glasses - wouldn't you want to have about ten of these, on the top shelf in your kitchen or wet bar? - and at right, an apron for the host or bartender, with a generously sized RMC seal on the front. Director and spokesmodel Carl Herz demonstrates the tie strings 'round the back.

Also in 2019, we offer a new t-shirt, with RMC seal on the chest and an overhead view of Crag Camp and King Ravine on the back (shown at left); green graphics on olive-green high-performance fabric.

For online orders, navigate to STUFF WE SELL at the website, [randolphmountainclub.org](http://randolphmountainclub.org), and pay by PayPal.



## Welcome new RMC members!

*Joined November 2018 - May 2019*

**Heather Lanman**, Somerville MA  
**Dave Boettcher**, Medford MA  
**David Handfield**, Montreal QC  
**Ross Goroshin**, St. Laurent Qc  
**Susannah Halpern**, Freedom NH  
**Joseph Kopena**, Philadelphia PA  
**Alison Keith**, Dover NH  
**James Walsh**, Monroeville PA  
**Jon Cristosomo**, Belchertown MA  
**Matt Ressler**, New Holland PA  
**Thomas Heisler**, Berlin CT  
**Julie Wright**, New Paltz NY  
**Michael Greene**, Lancaster NH  
**Nancy Seabury**, Freedom NH  
**Carrick Gambell**, Brookline MA

**Cynthia Baeza**, Staten Island NY  
**Thomas McKeever**, Staten Island NY  
**Kevin Storberg**, Staten Island NY  
**Samantha Loscalzo**, W. Milford NJ  
**Christopher Shih**, Montrose NY  
**Christian Forman**, Meriden NH  
**Osman Ahsen**, Waltham MA  
**Karl Hecker**, Keene NH  
**Mike Griffin**, Medford MA  
**Vianna Dornhecker**, Amherst NH  
**Jenna Maddock**, S. Berwick ME  
**Daniel Whittet**, Lincoln MA  
**Craig Jolly**, Santa Fe NM  
**Ashley Gionet**, Milford NH  
**Matt Doubleday**, Portsmouth NH  
**Ryan Bauer**, Morristown NJ  
**Lucas Hartford**, Bryant Pond ME  
**Michael Whitten**, Ledyard CT

**Geoffrey Osmun**, Boxborough MA  
**Jeff Socha**, Boylston MA  
**Kimberley Breil**, Wilbraham MA  
**James Viar**, Canterbury NH  
**Andrew DeLage**, Quincy MA  
**Michael Patterson**, Swansea MA  
**Brent Summers**, Wolfeboro NH  
**Robert Bond**, Jackson NH  
**David Cowan**, Cumberland Ctr. ME  
**Lisa Courcy**, Whitefield NH  
**Patricia Watson**, Westfield MA  
**David Lynch**, Brookline NH  
**Stephen Thienel**, Woodstock CT  
**Isaac Marston**, Auburn ME  
**Amanda Major**, Easthampton MA  
**Miles Smith**, Ottawa ON  
**Elizabeth Alexander**, Seattle WA  
**Mirela Postelnicu**, Middletown CT



Bev Jadis (kneeling, right) with other RMC directors at the April 28 board meeting at Town Hall. Back row: Carl Herz, Kate Hudson, Jamie Maddock, Dwight Bradley, Bob Drescher. Front row: Wendy Walsh, Jenn Scarinza, and Bev.

### **New RMC Director Bev Jadis**

*by Randy Meiklejohn, RMC secretary*

In April 2019, president Jamie Maddock appointed Bev Jadis as a new RMC director, to complete the remainder of the term of Jeff Smith, who had resigned after serving since 2013. Per the by-laws, Bev will serve until the 2019 Annual Meeting, when she is expected to be nominated for a three-year term.

Bev and her husband Paul became part time residents on Durand Road in 2012, and purchased their permanent home on Durand Road in 2016. After almost nineteen years in the corporate World of Dell and NTT Data, Bev joined the Appalachian Mountain Club last year as a Salesforce Administrator, working out of Joe Dodge Lodge at Pinkham Notch.

Originally from England, she moved at age 20 to Canada where she lived for almost twenty years, mostly in the Toronto area. From there, she moved to the United States, living first in Arizona and Rhode Island, and now in the beautiful White Mountains of New Hampshire.

Both Bev and Paul are active in the RMC and the Randolph community, and love being outdoors as much as possible. They are avid hikers, and love to travel over to the coast in Maine, where they were married three years ago.